

# QUICK-START GUIDE PIONEER DJM-850

serato



# Installation and Setup

To activate Serato DJ with the Pioneer DJM-850 it requires a Serato DJ license to be purchased and activated on your user account. The DVS Expansion Pack is also required to be purchased and activated before it can be used with NoiseMap™ control tone to control DVS playback. [You can purchase both products here.](#)

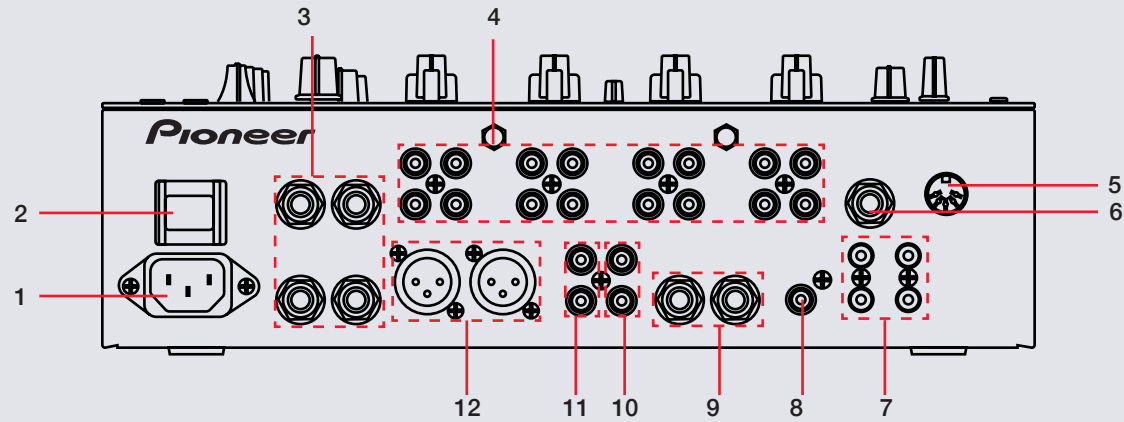
The Pioneer DJM-850 requires drivers on both Mac OS X and Windows. Please make sure you have the latest drivers installed. It is always important to connect your mixer directly to your computer, rather than a USB hub. Please also ensure you have installed the latest available version of Serato DJ.

To use the DVS Expansion Pack with the DJM-850 you will need to follow the steps in the [DVS Control section.](#)

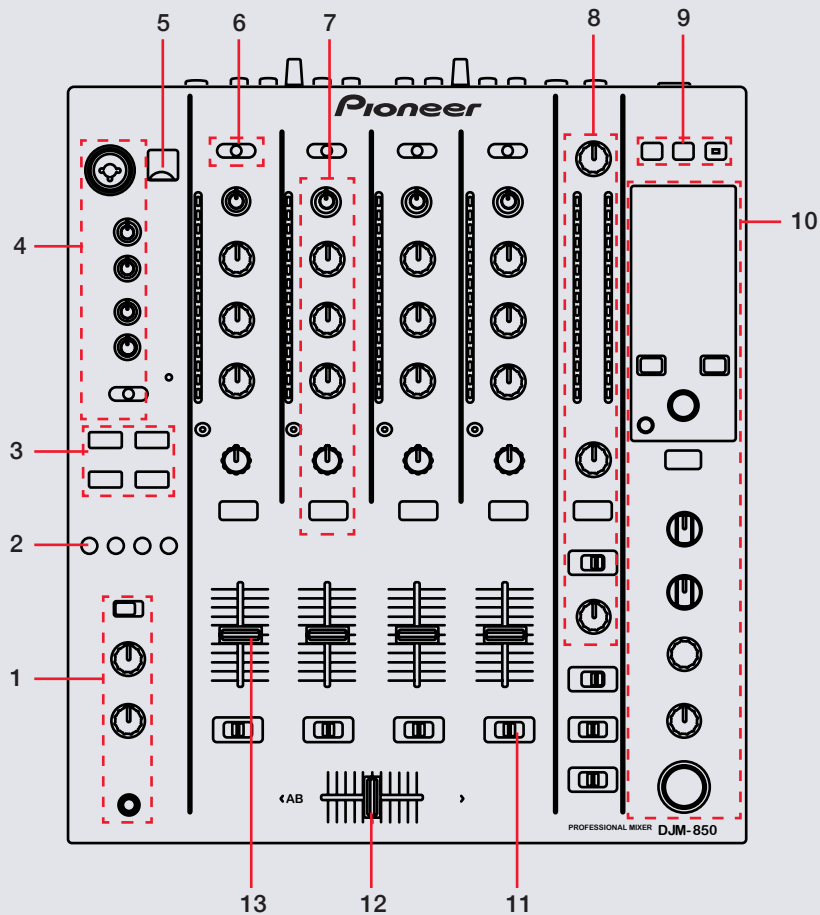
**serato**



# MIXER



#	DJM-850 Control	Function
1	DC POWER IN	Connect DC power cable
2	POWER ON	Mixer On/Off
3	SEND/RETURN	Send TRS output and Return TRS input
4	CHANNEL INPUTS	Channel RCA input
5	MIDI OUT	MIDI output
6	MIC2	MIC 2 TRS input
7	CONTROL	Control inputs for each channel
8	DIGITAL MASTER OUT	Digital master output
9	BOOTH	Booth TRS output
10	REC OUT	Record RCA output
11	MASTER2	Master 2 RCA output
12	MASTER1	Master 1 XLR output



#	DJM-850 Control	Function
1	HEADPHONES	Headphone output and controls
2	FADER START	Channel fader start
3	SOUND COLOR FX	DJM-850 Color FX
4	MICROPHONE	Microphone input and controls
5	USB	Connect USB to your computer
6	INPUT SOURCE SELECT	Input source select switch for each channel
7	CHANNEL CONTROLS	Gain, EQ, Color FX and headphone Cue monitoring for each channel
8	MASTER CONTROLS	Mixer master output controls
9	MIDI	DJM-850 MIDI controls
10	BEAT EFFECTS	DJM-800 Beat Effects and controls
11	FADER ASSIGN	Assign channels to cross fader A-B
12	CROSSFADER	Fade audio between channels
13	CHANNEL FADER	Adjust channel volume

## User Guide

For further information on DJM-850 controls and details on individual features please refer to the Pioneer DJM-850 Hardware User Guide.

[Download the DJM-850 User Guide from the Pioneer website here.](#)

serato



# DVS Control

To use the Pioneer DJM-850 mixer with DVS control and Serato DJ, you will first need to own a Serato DJ licence and a DVS Expansion Pack licence (these two products have been bundled together as the **Club Kit**). [Click here to purchase the Club Kit](#)

Once you have purchased and activated the Club Kit (or individual licences separately) follow the steps below to get DVS control working with your Pioneer DJM-850 mixer.

## Install Drivers

Connect your mixer and open the latest version of Serato DJ. You should see an **'INSTALL DRIVER'** dialogue box appear in the right hand side-panel. Click **'INSTALL DRIVER'** and follow the installer prompts. If you don't have the supported hardware with you right now you can still download the driver from the hardware manufacturers website.

## Select Input source

Once your turntables or CDJs are connected to the mixer, open the **SETUP** screen and under the **AUDIO** tab click the **SETUP INPUTS** button. This will open the device driver panel and let you choose which kind of input source you have connected. Depending on what kind of input you have connected (Turntables/CDJs) you will need to make sure this is set accordingly.

**NOTE:** If you do not set the mixer's input accordingly, DVS control will not work. Please make sure you have set the correct inputs and outputs in the **SETUP INPUTS** driver panel if you are having issues.

## Select Primary Decks

Also in the **AUDIO** tab of the **SETUP** screen, you will need to select your Primary Decks.

Choosing Channel 1 and 2, will allow you to have a traditional 1-2-3-4 channel configuration. Choosing Channel 2 and 3 will allow you to have a 3-1-2-4 configuration (from left to right across the mixer).

Select which deck configuration you are using with the mixer and change if necessary. If you notice you are getting signal from your control tone but on the wrong deck, you might need to double-check your Primary Decks in the **SETUP** screen or the physical inputs on the back of the mixer.

You are now set up to use your mixer with Serato DJ and DVS control using the REL or ABS control modes. See the Serato DJ manual for more information on Control Modes.

serato



## MIDI

The MIDI feature in Serato DJ provides the ability to remap Serato DJ software functions to your primary Serato DJ controller, interface or mixer. You can also assign controls to a secondary MIDI controller to further enhance your performance.

[For more information on MIDI mapping with Serato DJ click here.](#)

To remap your supported Serato DJ device, open the **SETUP** screen and click the **MIDI** tab. If your Serato DJ device supports hardware remapping it will show up in the **MIDI Devices** list at the top.

Select your connected device from the MIDI Devices list and make sure the “Enable MIDI device” option is checked.

Enable MIDI Device

Once checked, the MIDI assign button at the top of the screen will become available for you to start remapping.

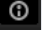
MIDI


You can save, edit or delete MIDI presets in the **MIDI** tab of the **SETUP** screen. Clicking **Restore Defaults** will erase any custom mappings for all connected devices and revert their functions back to default.

[Download the Serato DJ software manual for further information.](#)

**NOTE:** Official Serato Accessories do not currently support user remapping. Hardware features that cannot be remapped at this stage are Jogwheels/Platters, Input Switches, Shift buttons and Performance Pad Mode buttons. Re-mapping any pad(s) in Hot Cue mode will also re-map the same pad in Saved Flip mode and vice versa.

## Using the Tool Tips

Click on the  icon to enable Tool Tips. This is located in between the MIDI and setup button in the top right hand corner of the screen. Tool Tips provide a handy way to learn the various features of Serato DJ.

Move the mouse over a section of the screen to bring up a context sensitive tool tip. Holding the mouse over the  button with Tool Tips turned on will show you a list of all keyboard shortcuts.

[For more information about how to use Serato DJ, please go to our website \[www.serato.com\]\(http://www.serato.com\) or download the Serato DJ Manual.](#)

[For more information on your DJM-850, please refer to the Pioneer DJM-850 manual.](#)

## Recording

You are able to record the software mix with Serato DJ and the DJM-850. To make sure your mixer is set up for recording, open the **SETUP** screen and click the **AUDIO** tab. Launch the device driver panel by clicking the **DECK SETUP** button at the top of the **AUDIO** tab.

Nominate a channel under the **MIXER OUTPUT** tab and select ‘REC OUT’ in the dropdown menu. This will give up this channel for recording and you will not be able to use this channel in Serato DJ while it is selected as a recording channel. Once you have selected a channel for recording, close the SETUP screen and open the REC panel. Select the same channel you nominated as the output for recording. This will now allow you to record the software mix.

serato

