

QUICK-START GUIDE

PIONEER DDJ ERGO

serato



Installation and Setup

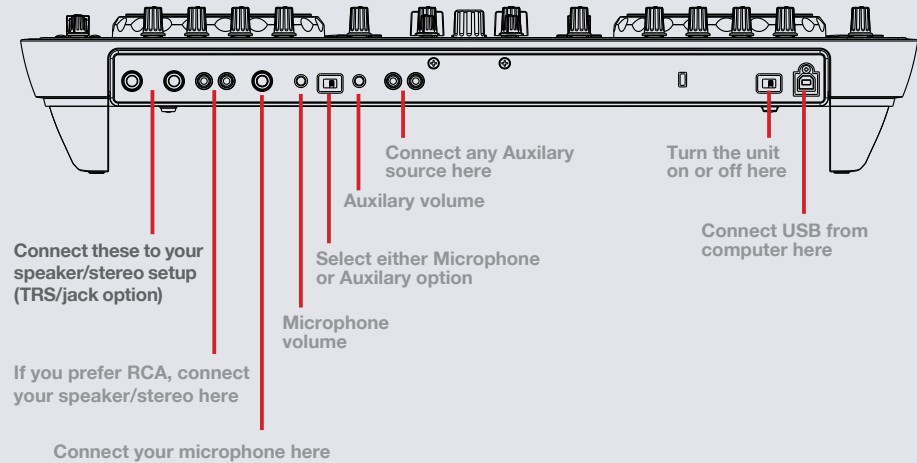
The Pioneer DDJ-ERGO is a class compliant USB plug and play device for Mac, however requires drivers for Windows. You will find these on the installation cd provided with your Pioneer DDJ-ERGO.

NOTE: Please ensure you have the latest available drivers AND firmware updates, which may be required in order to be compatible with Serato DJ. Please go to <http://serato.com/dj/support>

1. Download and Install the latest version of Serato DJ from <http://serato.com/dj/downloads>
2. Connect your Pioneer DDJ-ERGO to an available USB Port.
3. Open Serato DJ.

Serato DJ Activation

To find out how to activate Serato DJ by either starting your free 14 day trial, or purchasing a license for Serato DJ, [click here](#) for the most up to date information.

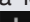




serato



Looping

You have the choice of Auto or Manual Looping within Serato DJ with the Pioneer DDJ-S1.

NOTE You can also save a loop to the next available free loop slot in the software. To do this, click  on an available loop slot. Your loops are saved to the file and recalled the next time it is loaded. They are not lost if the file is moved or renamed.


NOTE: You can also save a loop to the next available free loop slot in the software. To do this, either click the  button in the manual/auto loop tab or click  on an available loop slot. Your loops are saved to the file and recalled the next time it is loaded. They are not lost if the file is moved or renamed.

DDJ-ERGO Control	Manual Loop Mode	Shift
IN	Set loop in point (Loop not active)	
IN	Adjust loop in point (Loop active)	Loop Shift Left (Loop active)
OUT	Set loop out point (Loop in point set)	
OUT	Adjust loop out point (Loop active)	Loop Shift Right (Loop active)



NOTE The best way to edit the start and end points of a manual loop is with the jog wheel/platter on your DDJ-ERGO.

DDJ-ERGO Control	Auto Loop Mode	Shift
Press AUTO LOOP (knob)	Auto loop On/Off	
Twist AUTO LOOP (knob)	Halve/Double Loop Length	Reloop

DJ-FX

The DJ-FX in Serato DJ are powered by iZotope™. Click the FX tab  to open the FX panel. Select either 1, 2, 3, 4 or M to assign the selected effect bank to a deck or Master Output.

There are two available modes in the DJ-FX. Single FX Mode allows you to select one effect per FX bank, and has multiple parameters that can be adjusted. Multi FX Mode allows you to select up to three effects per FX bank, and adjust only one parameter, the FX Depth. The same effects available in Single FX mode are available in Multi FX mode, as well some additional presets.

You can select between the two FX modes by clicking either the Single FX mode button  or Multi FX mode button 

DDJ-ERGO Control	Single FX Mode	Multi FX Mode	Shift
ON	Effect On/Off	Slot 1 Effect On/Off	Select Effect in Slot 1
CONTROL	Adjust Parameter 1	Adjust Slot 1 FX Parameter	
FX Button 1	Adjust Parameter 2	Slot 2 Effect On/Off	Select Effect in Slot 2
FX Knob 1	Adjust Parameter 3	Adjust Slot 2 FX Parameter	
FX Button 2	Adjust Parameter 4	Slot 3 Effect On/Off	Select Effect in Slot 3
FX Knob 2	Adjust Parameter 5	Adjust Slot 3 FX Parameter	

FX Button 3	Adjust Beats Multiplier	Adjust Beats Multiplier	Toggle between FX Modes
FX Knob 3	Tap to the desired FX tempo. To return to AUTO mode, press and hold	Tap to the desired FX tempo. To return to AUTO mode, press and hold	

Serato Video

Serato Video is a software plugin for Serato Software which adds the ability to playback and mix video files, use effects and fader transitions with your Serato DJ Controller, an additional MIDI controller or your mouse/keyboard.

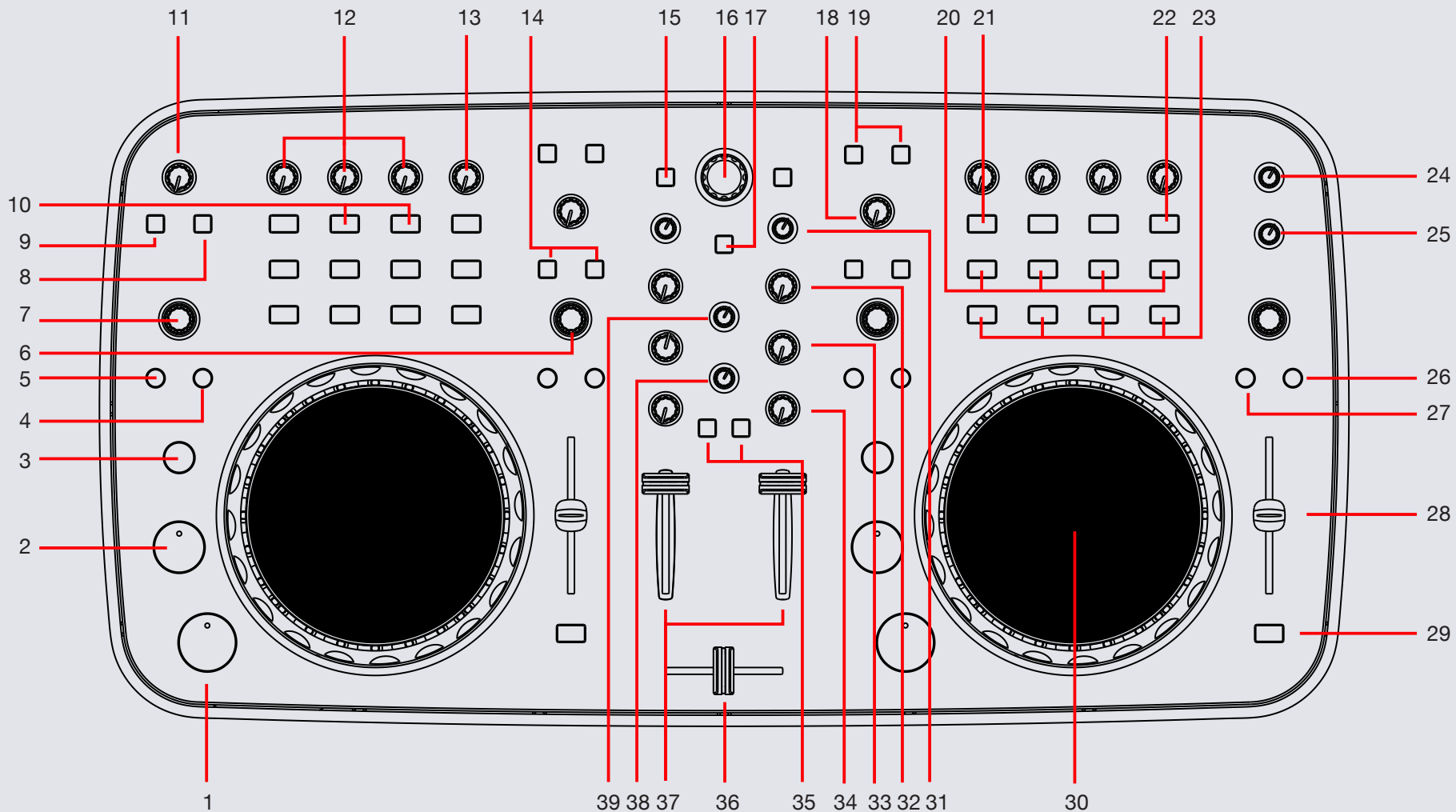
[For more information on Serato Video click here.](#)

MIDI

The MIDI control feature in Serato DJ provides the ability to map Serato DJ software functions to MIDI controller functions such as keyboards, triggers, sliders, and knobs. Integrating MIDI controllers into your Serato DJ setup can improve live performance usability, such as hitting pads on a MIDI controller to trigger Loops and Cue Points.

[For more information download the Serato DJ manual here.](#)

NOTE You can not MIDI Map your Pioneer DDJ-ERGO, you will need to connect an additional MIDI controller to use these MIDI functions.



NOTE: SHIFT button is used with other buttons that have shift modifier functions.

#	DDJ-ERGO CONTROLS	SERATO DJ FUNCTIONS	SHIFT
1	PLAY/PAUSE	Play/Pause	Stutter Play
2	CUE	Temporary Cue	Jump to start of track (more than 2 Sec elapsed) Previous track (less than 2 sec elapsed)
3	SHIFT	The SHIFT button is used with other buttons that have shift modifier functions	
4	OUT	Set loop out point (Loop in point set)/Adjust loop out point (Loop active)	Loop Shift Right (Loop active)
5	IN	Set loop in point (Loop not active)/Adjust loop in point (Loop active)	Loop shift Left (Loop active)
6	SAMPLE VOL	Adjust Sample Player Volume (Twist)/Sample Player Mute (Click)	Momentary Sample Player Mute (Click)
7	AUTOLOOP	Auto Loop On/Off (Click)/Adjust Loop Length (Twist)	Reloop
8	F3 (Button)	Toggle 2/4 Deck View Mode	
9	F2 (Button)	Cycle REC/FX/SP-6 panels	Cycle SP-6/FX/REC panels
10	FX 1/2 (Buttons)	Slot 2/3 Effect On/Off	Select Effect in Slot 2/3
11	F1 (Knob)	Adjust Braking Speed	
12	FX CONTROL/1/2 (Knobs)	Adjust Slot 1/2/3 FX Parameters	
13	FX 3 (Knob)	Adjust Beats Multiplier	
14	FX 1/2 (Buttons)	Assign FX UNIT 1/2 to Active Deck	
15	LOAD	Load track to selected deck	
16	BROWSE	Scroll through currently focused area (library/crates/etc)	Fast Library Scroll
17	FUNCTION	Start/Stop Recording	
18	FILTER	Adjust Combo Filter	
19	DECK	Select Active Deck 1/3 (Left Deck) or 2/4 (Right Deck)	
20	SAMPLER 1-4	Sample Slot Trigger 1-4	Sample Slot Stop 1-4
21	ON	Slot 1 Effect On/Off	Select Effect in Slot 1


#	DDJ-ERGO CONTROL	SERATO DJ FUNCTIONS	SHIFT
22	FX 3 (Button)	Tap to the desired FX tempo. To return to AUTO mode, press and hold	Toggle between Single/Multi FX Modes
23	HOT CUE 1-4 (Buttons)	Adds/Trigger Cue Points 1-4	Delete Cue Points 1-4
24	MASTER VOL	Adjust Master Output	
25	AUX/MIC VOL	Adjust Aux/Mic Output	
26	KEYLOCK	Keylock On/Off	Cycles through available Tempo Range options
27	VINYL	Toggle between Scratch or Jog	Change Pulse Lighting Mode
28	TEMPO FADER	Adjust Tempo	When in Sync mode, used to disable the Pitch Fader temporarily and change the zero position
29	SYNC	Sync On	Sync Off (Press twice to return to Absolute Pitch when in Relative Mode)
30	JOG WHEEL	Scratch or Jog deck	Beat Skip
31	GAIN	Adjust Channel Gain	
32	HI	Adjust HI EQ	
33	MID	Adjust MID EQ	
34	LOW	Adjust LOW EQ	
35	CUE	Cue selected channel in headphones	
36	CROSSFADER	Crossfades between the two channels	
37	CHANNEL FADERS	Adjust channel volume	
38	CUE VOL	Adjust Cue Volume	
39	CUE MIX	Adjust Cue mix between CUE and MASTER	

NOTE: Braking Speed is set to 12 o'clock by default in Serato DJ. However, when F1 (Braking Speed) is adjusted on the DDJ-ERGO, the braking speed will correspond to the position of the F1 knob.


serato



Using the Tool Tips

Click on the  icon to enable Tool Tips. This is located in between the MIDI and setup button in the top right hand corner of the screen.

Tool Tips provide a handy way to learn the various features of Serato DJ.

Move the mouse over a section of the screen to bring up a context sensitive tool tip. Holding the mouse over the  button with Tool Tips turned on will show you a list of all keyboard shortcuts.

For more information about how to use Serato DJ, please go to our website www.serato.com or refer to the Serato DJ Software Manual. For more information on your controller, please refer to the hardware manual.

For further help, please contact support@serato.com or go to www.serato.com/dj/support

serato

